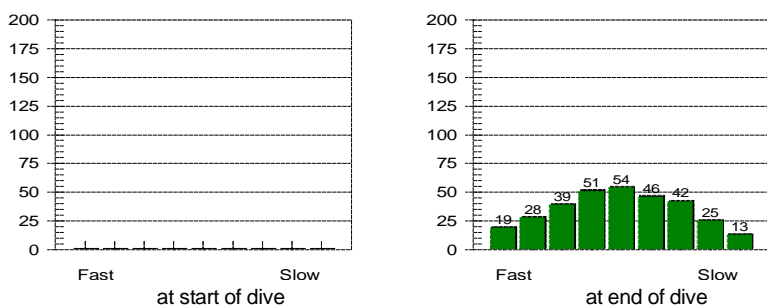


Tissue saturation percentages



Other Information

Partner **Dave Harper**
 Dive Master
 Dive Boat **Searcher**
 Weather
 Visibility **2 - 3 m**
 Weight Used **14 kg**
 Air Temp. **14 ° C**
 Water Temp., Max Depth **13 ° C** End of dive **13 ° C**
 Location **Plymouth**
 Island
 Custom 3
 Custom 4
 Custom 5
 Dive Gear **10kg, ATX50/ATX40, Cortex, Delayed SMB, Extreme, Gloves 5mm, Jet Fins, Mosquito, Reel, Supercchio**

Dive No. 77 **26/06/2004**
 England
 Breakwater Fort

Information from dive computer

Max Depth **14.6 m**
 Dive Time **55:20**
 Date of Dive **26/06/2004**
 Start Time **10:37**
 End Time **11:32**
 DC Dive no. **1**
 Surface Interval **0:00**
 Altitude Mode **A0**
 Personal Setting **P0**
 ID no. **24305332**
 Personal Info **Exploration**
 Model **Mosquito**
 Sampling Rate **20**
 Alarms Recorded **SLOW**

Oxygen Percent
 OLF

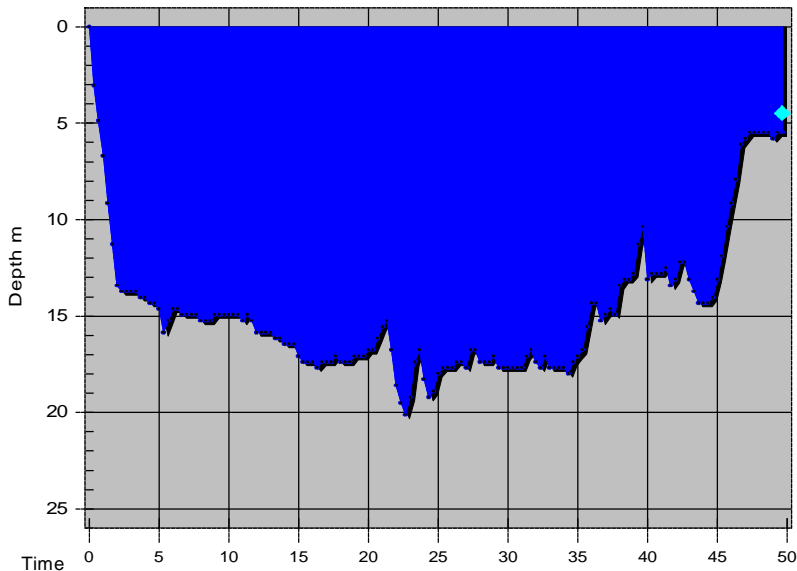
Dive manually added
 Dive modified
 Tissue pressures invalid
 Cylinder Size **12.0 liters**
 Working Pressure **232 bar**
 Cylinder Pressure
 Start **200 bar**
 End **80 bar**

Information Computed by logbook

Average Depth **9.8 m**
 Surface Air Consumption **12.67 SLM**
 Air Used
 Standard Volume **1440.0 liters**
 Pressure **120 bar**
 Pressure per min. **2 bar**

Notes **Weather prevented us from diving the Scylla - we were beaten back by 2m swells before reaching the headland. George nearly sank the rib by sitting on the motor. My drysuit valve was closed on entry which prevented my descent. Good to get back in the water (and the sea!) but my buoyancy was a little hit and miss. Being dragged back into the rib was interesting.**

C:\Documents and Settings\Helen\My Documents\Diving\Plymouth_2004-06-28.rtf



Dive No. 78

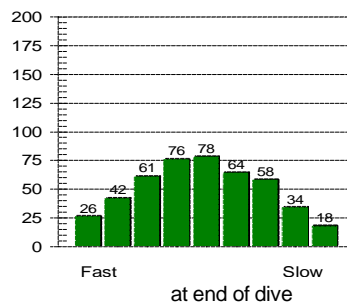
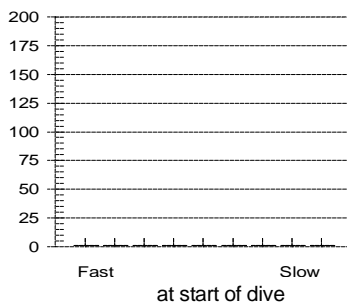
27/06/2004

England
HMS Scylla

Information from dive computer

Max Depth **20.1 m**
 Dive Time **49:40**
 Date of Dive **27/06/2004**
 Start Time **10:14**
 End Time **11:03**
 DC Dive no. **1**
 Surface Interval **22:42**
 Altitude Mode **A0**
 Personal Setting **P0**
 ID no. **24305332**
 Personal Info **Wreck Dive**
 Model **Mosquito**
 Sampling Rate **20**
 Alarms Recorded **SLOW**

Tissue saturation percentages



Oxygen Percent
OLF

Other Information

Partner **Dave Harper**
 Dive Master
 Dive Boat **Kara-C**
 Weather
 Visibility **4 - 5 m**
 Weight Used **13 kg**
 Air Temp. **14 ° C**
 Water Temp., Max Depth **13 ° C** End of dive **13 ° C**
 Location **Plymouth**
 Island
 Custom 3
 Custom 4
 Custom 5
 Dive Gear **10kg, ATX50/ATX40, Cortex, Delayed SMB, Extreme, Gloves 5mm, Jet Fins, Mosquito, Reel, Supercchio**

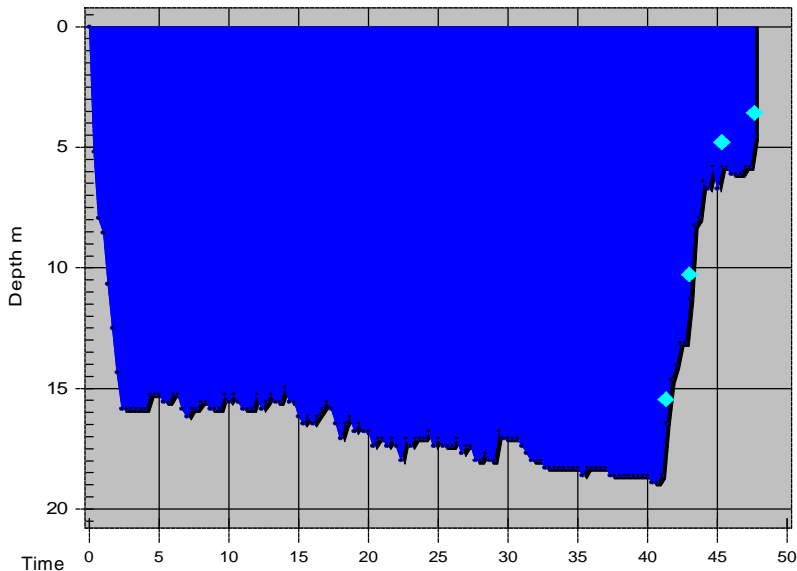
Dive manually added
 Dive modified
 Tissue pressures invalid
 Cylinder Size **12.0 liters**
 Working Pressure **232 bar**
 Cylinder Pressure
 Start **200 bar**
 End **50 bar**

Information Computed by logbook

Average Depth **14.7 m**
 Surface Air Consumption **13.98 SLM**
 Air Used
 Standard Volume **1800.0 liters**
 Pressure **150 bar**
 Pressure per min. **3 bar**

Notes **We were the only rib to arrive at the Scylla - no one else braved the weather out to the headland. Bimble around on the deck, into the outer holds. Very surreal to see the 'National Marine Aquarium' and huge 'HMS Scylla' letters on the hull of the frigate. Still a very new and white wreck. Went into the wheelhouse before making ascent. Also a graceful reentry to the rib.**

C:\Documents and Settings\Helen\My Documents\Diving\IP6270013.jpg
 C:\Documents and Settings\Helen\My Documents\Diving\IP6270022.jpg



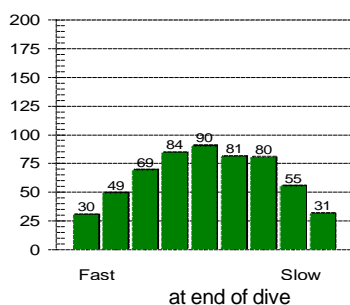
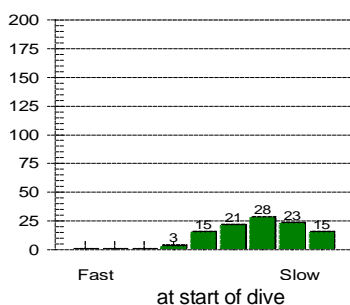
Dive No. 79 **27/06/2004**
 England
 Corsands Bay

Information from dive computer

Max Depth **18.9 m**
 Dive Time **47:40**
 Date of Dive **27/06/2004**
 Start Time **13:19**
 End Time **14:06**
 DC Dive no. **2**
 Surface Interval **2:14**
 Altitude Mode **A0**
 Personal Setting **P0**
 ID no. **24305332**
 Personal Info **Exploration**
 Model **Mosquito**
 Sampling Rate **20**
 Alarms Recorded **SLOW**

Oxygen Percent
 OLF

Tissue saturation percentages



Other Information

Partner **Dave Harper**
 Dive Master
 Dive Boat **Kara-C**
 Weather
 Visibility **2 - 3 m**
 Weight Used **13 kg**
 Air Temp. **18 ° C**
 Water Temp., Max Depth **13 ° C** End of dive **14 ° C**
 Location **Plymouth**
 Island
 Custom 3
 Custom 4
 Custom 5
 Dive Gear **10kg, ATX50/ATX40, Cortex, Delayed SMB, Extreme, Gloves 5mm, Jet Fins, Mosquito, Reel, Supercchio**

Dive manually added
 Dive modified
 Tissue pressures invalid
 Cylinder Size **12.0 liters**
 Working Pressure **232 bar**
 Cylinder Pressure
 Start **210 bar**
 End **70 bar**

Information Computed by logbook

Average Depth **15.4 m**
 Surface Air Consumption **13.19 SLM**
 Air Used
 Standard Volume **1680.0 liters**
 Pressure **140 bar**
 Pressure per min. **3 bar**

Notes **Experienced some current on the reef. Lots of spider crabs and kelp. Harper insisted I carried the SMB as I had been demonstrating a willingness to fin into the current. Yet another graceful reentry to the rib aided by Tom and George. I'm not sure inflating my suit to the max aided!**