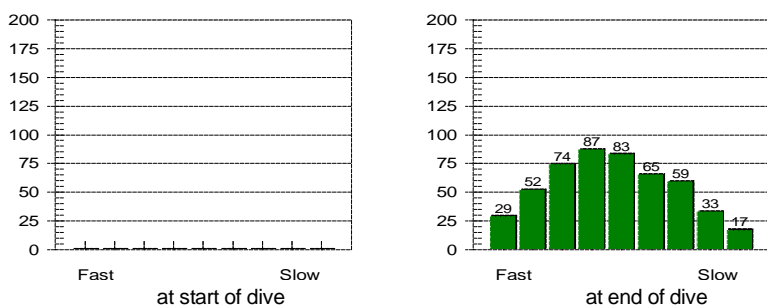


Tissue saturation percentages



Other Information

Partner **Chrissy Draper**  
 Dive Master  
 Dive Boat **Top Gun**  
 Weather  
 Visibility **5 - 6 m**  
 Weight Used **12 kg**  
 Air Temp. **17 ° C**  
 Water Temp., Max Depth **13 ° C** End of dive **13 ° C**  
 Location **Portland**  
 Island  
 Custom 3  
 Custom 4  
 Custom 5  
 Dive Gear **8kg, ATX50/ATX40, Cortex, Delayed SMB, Dumpy 12ltr, Extreme, GloTorch, Gloves 5mm, Jet Fins, Knife, Mosquito, Pro 2000, Reel, Superocchio, Watch**

**Dive No. 111** **07/11/2004**  
 England  
 Cannonball Run

Information from dive computer

Max Depth **23.5 m**  
 Dive Time **36:40**  
 Date of Dive **07/11/2004**  
 Start Time **11:20**  
 End Time **11:56**  
 DC Dive no. **1**  
 Surface Interval **0:00**  
 Altitude Mode **A0**  
 Personal Setting **P0**  
 ID no. **24305332**  
 Personal Info **Drift Dive**  
 Model **Mosquito**  
 Sampling Rate **20**  
 Alarms Recorded **SLOW**

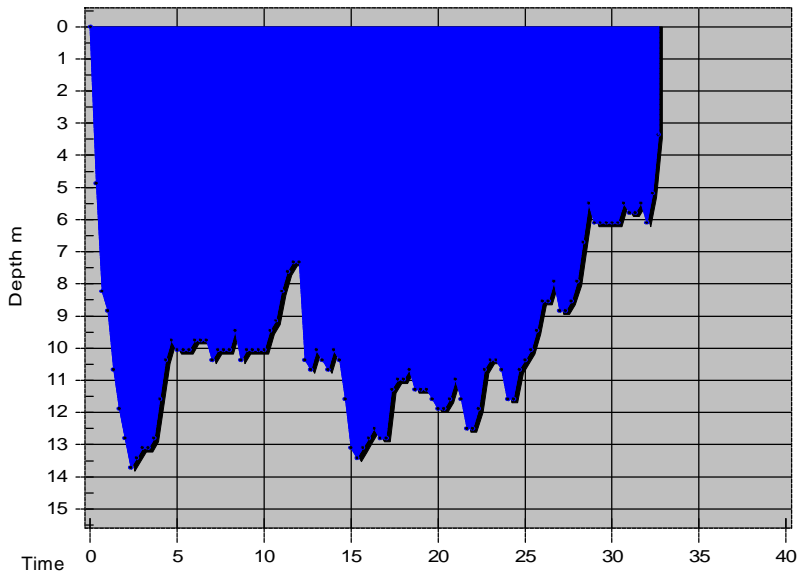
Oxygen Percent  
 OLF

Dive manually added  
 Dive modified  
 Tissue pressures invalid  
 Cylinder Size **12.0 liters**  
 Working Pressure **232 bar**  
 Cylinder Pressure  
 Start **190 bar**  
 End **50 bar**

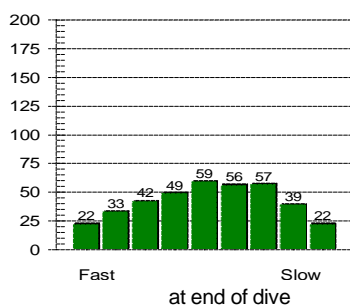
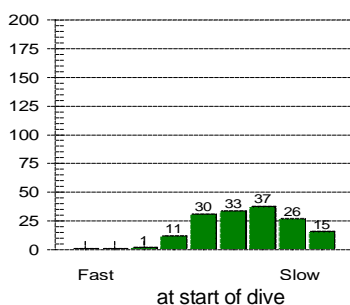
Information Computed by logbook

Average Depth **19.4 m**  
 Surface Air Consumption **14.84 SLM**  
 Air Used  
 Standard Volume **1680.0 liters**  
 Pressure **140 bar**  
 Pressure per min. **4 bar**

Notes **The dive to do if scallops is your thing! Didn't know they behaved as they do, quite surprising to see tiny things rise vertically from the seabed. Saw a curious fish camouflaged on the seabed. Encouraged Chrissy to deploy her SMB and dive with it, I helped her with the ascent. Had to fin for entire safety stop with the reel, circling Chrissy and demonstrating contortionist tactics to vent air from my suit as I was underweighted with the base layer and weezele. Fun dive.**



### Tissue saturation percentages



### Other Information

Partner **George Marr**  
 Dive Master  
 Dive Boat **Maverick**  
 Weather  
 Visibility **1 - 3 m**  
 Weight Used **13 kg**  
 Air Temp. **15 ° C**  
 Water Temp., Max Depth **14 ° C** End of dive **12 ° C**  
 Location **Portland**  
 Island  
 Custom 3  
 Custom 4  
 Custom 5  
 Dive Gear **8kg, ATX50/ATX40, Cortex, Delayed SMB, Dumpy 12ltr, Extreme, GloTorch, Gloves 5mm, Jet Fins, Knife, LaserPro M13, Mosquito, Pro 2000, Reel, Superocchio, Watch**

**Dive No. 112** **07/11/2004**  
 England  
 Countess of Erne

### Information from dive computer

Max Depth **13.7 m**  
 Dive Time **32:40**  
 Date of Dive **07/11/2004**  
 Start Time **13:23**  
 End Time **13:55**  
 DC Dive no. **2**  
 Surface Interval **1:26**  
 Altitude Mode **A0**  
 Personal Setting **P0**  
 ID no. **24305332**  
 Personal Info **Wreck Dive**  
 Model **Mosquito**  
 Sampling Rate **20**  
 Alarms Recorded

Oxygen Percent  
 OLF

Dive manually added  
 Dive modified  
 Tissue pressures invalid  
 Cylinder Size **12.0 liters**  
 Working Pressure **232 bar**  
 Cylinder Pressure  
 Start **200 bar**  
 End **120 bar**

### Information Computed by logbook

Average Depth **9.9 m**  
 Surface Air Consumption **13.99 SLM**  
 Air Used  
 Standard Volume **960.0 liters**  
 Pressure **80 bar**  
 Pressure per min. **2 bar**

Notes **George and I planned to penetrate the Countess. Other divers had silted ahead of us so we didn't get through the holds as intended. George had flooded on his first dive so was feeling cold. Aborted dive just as it was getting interesting and schools of fish appeared at the shot! Dancing on safety stop to warm George up.**