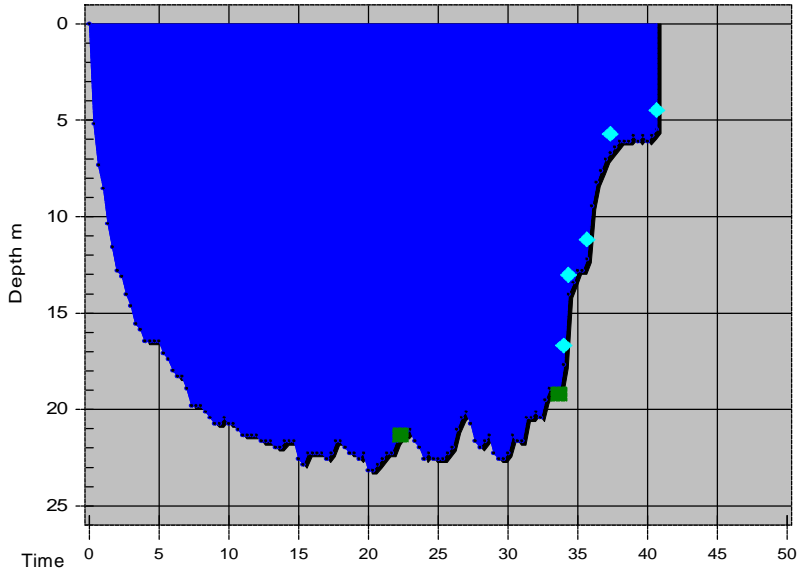


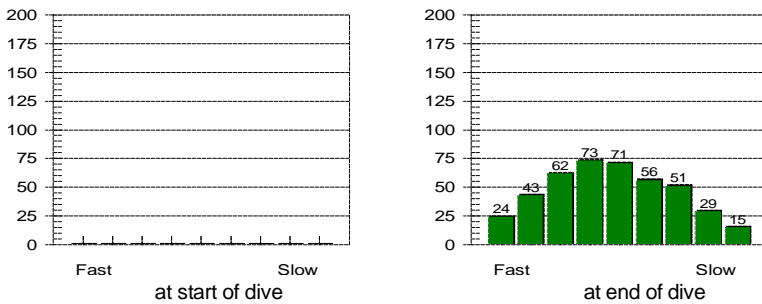
Dive No. 106 **15/10/2004**
 England



Information from dive computer

Max Depth	23.2 m
Dive Time	40:40
Date of Dive	15/10/2004
Start Time	09:04
End Time	09:44
DC Dive no.	1
Surface Interval	0:00
Altitude Mode	A0
Personal Setting	P0
ID no.	24305332
Personal Info	Exploration
Model	Mosquito
Sampling Rate	20
Alarms Recorded	SLOW
Oxygen Percent	30 %
OLF	10 % CNS

Tissue saturation percentages



Other Information

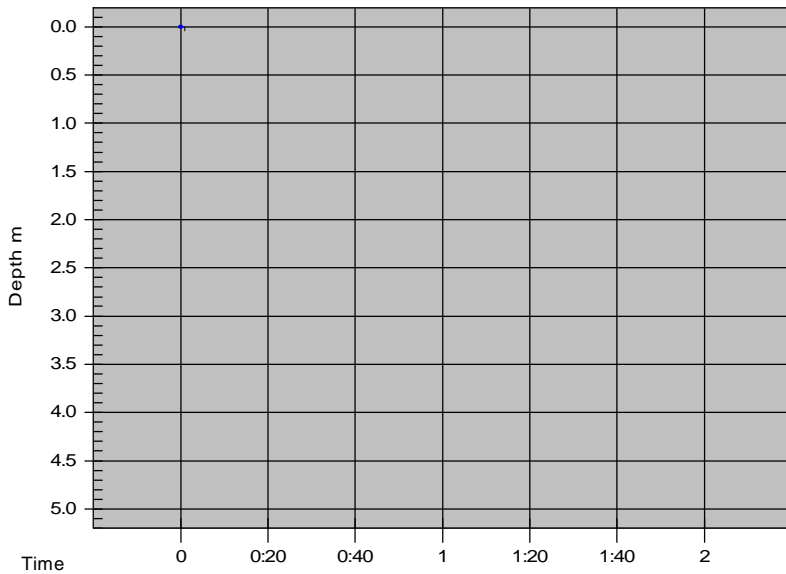
Partner	Tom Yearley		
Dive Master			
Dive Boat	Wavedancer		
Weather			
Visibility	6 - 7 m		
Weight Used	12 kg		
Air Temp.	13 ° C		
Water Temp., Max Depth	12 ° C	End of dive	12 ° C
Location	Farne Islands		
Island			
Custom 3			
Custom 4			
Custom 5			
Dive Gear	8kg, ATX50/ATX40, Cortex, Delayed SMB, Dumpy 12ltr, Extreme, GloTorch, Gloves 5mm, Jet Fins, Knife, Mosquito, Pro 2000, Reel, Superocchio, Watch		

<input type="checkbox"/>	Dive manually added
<input type="checkbox"/>	Dive modified
<input checked="" type="checkbox"/>	Tissue pressures invalid
Cylinder Size	12.0 liters
Working Pressure	232 bar
Cylinder Pressure	
Start	190 bar
End	60 bar

Information Computed by logbook

Average Depth	18.1 m
Surface Air Consumption	13.05 SLM
Air Used	
Standard Volume	1560.0 liters
Pressure	130 bar
Pressure per min.	3 bar

Notes **The sea was beautifully calm and silent - could have been in the tropics but for the drop in temperature. Good vis, cold water, plenty of different life to see. Millions of sea stars carpeted the reef, looked like varying sizes of spiders. Difficult ears caused me to surface with blood seeping from my mask.**

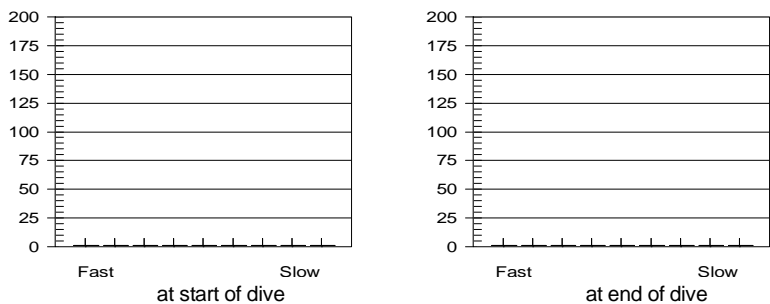


Dive No. 107 **15/10/2004**
 England

Information from dive computer

Max Depth **0.0 m**
 Dive Time **0:00**
 Date of Dive **15/10/2004**
 Start Time **10:54**
 End Time **10:54**
 DC Dive no. **2**
 Surface Interval **1:10**
 Altitude Mode **A0**
 Personal Setting **P0**
 ID no. **24305332**
 Personal Info **Seal Dive**
 Model **Mosquito**
 Sampling Rate **20**
 Alarms Recorded

Tissue saturation percentages



Oxygen Percent **21 %**
 OLF **0 % OTU**

Other Information

Partner **Tom Yearley**
 Dive Master
 Dive Boat **Wavedancer**
 Weather
 Visibility **4 - 5 m**
 Weight Used **12 kg**
 Air Temp. **13 ° C**
 Water Temp., Max Depth **12 ° C** End of dive **0 ° C**
 Location **Farne Islands**
 Island
 Custom 3
 Custom 4
 Custom 5
 Dive Gear **8kg, ATX50/ATX40, Cortex, Delayed SMB, Dumpy 12ltr, Extreme, GloTorch, Gloves 5mm, Jet Fins, Knife, Mosquito, Pro 2000, Reel, Superocchio, Watch**

Dive manually added
 Dive modified
 Tissue pressures invalid
 Cylinder Size **12.0 liters**
 Working Pressure **232 bar**
 Cylinder Pressure
 Start **210 bar**
 End **80 bar**

Information Computed by logbook

Average Depth **0.0 m**
 Surface Air Consumption **0 SLM**
 Air Used
 Standard Volume **1560.0 liters**
 Pressure **130 bar**
 Pressure per min. **0 bar**

Notes **Flooded my mosquito! Seals in the water on entry, close to the reef, unsettled on the surface with seals on the surface watching us, close by. Thought I had a seal nibbling on my fins only to find I was tangled in kelp! Saw a few seals during the dive, very graceful swimmers. Kelp forest was beautiful but gave us all motion sickness - like being in a washing machine!**